



*Awakening the senses  
to something new*



Welcome to

# OCEAN HOUSE

ELLINGTON

An exclusive collection of oceanfront residences surrounded by an oasis of palm trees and abundant flora and fauna delivering dramatic views of the ocean's turquoise water.





*A home of unique experiences curated for residents seeking a lifestyle incomparable to anywhere else*



An aerial photograph of Palm Jumeirah, Dubai, at sunset. The crescent-shaped island is illuminated by the warm, golden light of the setting sun, which is visible on the right side of the frame. The sky is filled with soft, wispy clouds, and the water of the Persian Gulf is a deep blue. In the background, the Dubai skyline is visible, including the Burj Khalifa. The foreground shows the curved beach and the iconic Atlantis The Palm hotel.

## A continuation of a design legacy on the Palm's Northeastern Crescent

Palm Jumeirah embodies a modern era of leisure and innovation. Yet through its relationship with the sea, it is forever linked to Dubai's maritime heritage by 17 fronds and a crescent-shaped outer beach reconnecting the city with the restorative effects of the ocean.

Far more than an island, The Palm is a true marvel of engineering symbolic of the region's yearning for individualism and modernization.



## Discover a new state of flow

Ocean House is a design identity that links the fluidity of the ocean to the curves of the property's architecture. Using soft shadows and intricate textures, it communicates a seamless state of flow.



## Every detail matters

In both its interior and exterior, Ocean House's, design language exudes uniqueness and embraces the unexpected. Contemporary unprecedented layers and shapes, clean travertine tones, natural woods and the masterful use of natural light reflect a design philosophy in which elegance and appreciation for sleek structures become then the ultimate expression of luxury.





Private pools and gardens bringing living spaces and lifestyles to a higher level



## Above & beyond experiences

A wealth of experiences and amenities that fit seamlessly with the unique lifestyles of our residents.

From a garden oasis Olympic pool, wellness spa that features a salt cave, aromatherapy shower experience, hydrotherapy path walks, design-led show kitchen for private functions, club lounge with a cigar terrace and a cinema room.



Drop-off Area  
Creating a sense of arrival



The Lobby  
A grand welcome



## Pool Deck

Olympic pool in an oasis garden



# Health Club

Higher perspectives on fitness



# Cinema Room

A movie-theatre experience



Kids' Play Area  
Imaginative spaces to explore



WELLNESS SPA

Salt Cave

Steam

Infrared  
Sauna

# Wellness Spa

Wellness retreat at your doorstep



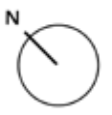
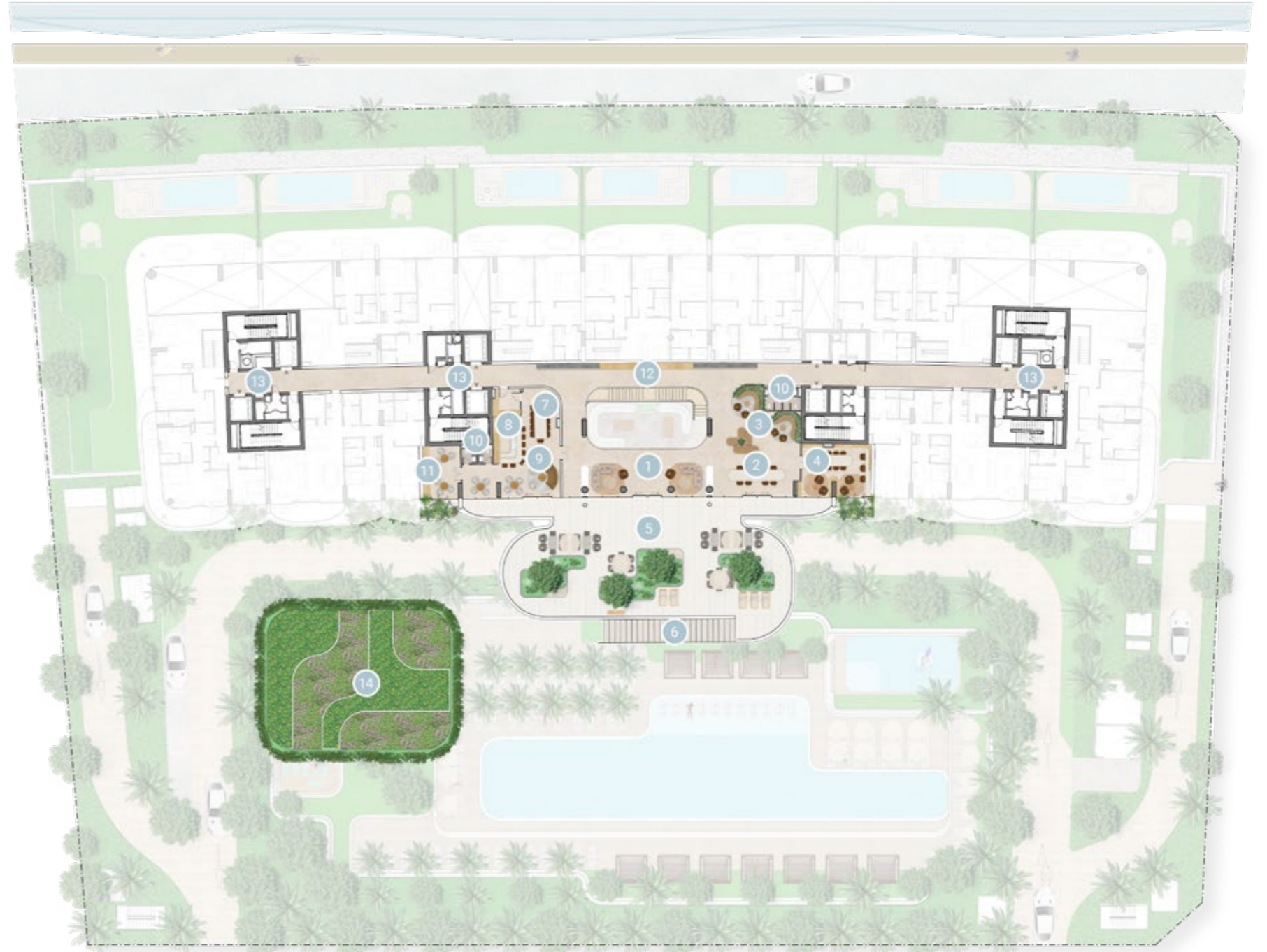
# GROUND FLOOR AMENITIES PLAN

- 01 MAIN ENTRANCE
- 02 KIDS PLAY AREA
- 03 KIDS BATHROOM
- 04 MEETING ROOM
- 05 LOBBY LOUNGE
- 06 LOBBY ENTRANCE
- 07 DROP-OFF AREA
- 08 LOBBY RECEPTION
- 09 CINEMA ROOM
- 10 GAMES ROOM
- 11 ACCESS TO THE POOL TERRACE
- 12 FEATURE STAIRCASE
- 13 OLYMPIC SIZE POOL
- 14 BAJA SHELF
- 15 CABANAS
- 16 SUN LOUNGERS' AREA
- 17 KIDS POOL
- 18 FITNESS STUDIO
- 19 OUTDOOR YOGA DECK
- 20 FEMALE CHANGE ROOM
- 21 MALE CHANGE ROOM
- 22 ACCESS TO WELLNESS SPA
- 23 VISITOR PARKING
- 24 VEHICLE ENTRANCE
- 25 VEHICLE EXIT
- 26 SALT CAVE
- 27 STEAM ROOM
- 28 INFRARED SAUNA ROOM
- 29 PLUNGE POOL
- 30 AROMATHERAPY EXPERIENCE SHOWER
- 31 HYDROTHERAPY PATH WALK
- 32 ACCESS TO BASEMENT PARKING



# 1<sup>ST</sup> FLOOR AMENITIES PLAN

- 01 LOUNGE AREA
- 02 COMMUNAL TABLE
- 03 CO-WORKING AREA
- 04 LIBRARY ROOM
- 05 OUTDOOR TERRACE LOUNGE
- 06 ACCESS TO POOL DECK
- 07 PRIVATE DINING
- 08 SHOW KITCHEN
- 09 PRIVATE LOUNGE
- 10 WASHROOM
- 11 CIGAR ROOM
- 12 GALLERY WALL
- 13 LIFT LOBBIES
- 14 ROOFTOP GARDEN



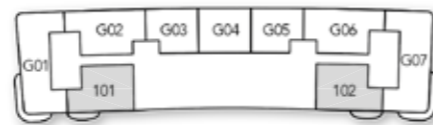


2 BEDROOM SINGLE ASPECT



| Internal Living Area | Outdoor Living Area | Total Living Area |
|----------------------|---------------------|-------------------|
| 1895.42 sq.ft        | 153.82 sq.ft        | 2049.23           |

1<sup>st</sup> Floor

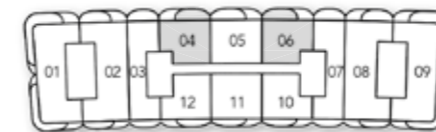


2 BEDROOM SINGLE ASPECT  
TYPE A



| Internal Living Area | Outdoor Living Area | Total Living Area |
|----------------------|---------------------|-------------------|
| 1519.22 sq.ft        | 266.62 sq.ft        | 1785.84 sq.ft     |

2<sup>nd</sup> Floor - 7<sup>th</sup> Floor

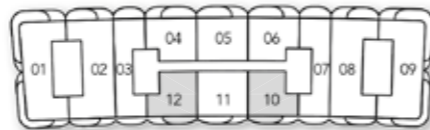


2 BEDROOM SINGLE ASPECT  
TYPE B



| Internal Living Area | Outdoor Living Area | Total Living Area |
|----------------------|---------------------|-------------------|
| 1470.78 sq.ft        | 171.47 sq.ft        | 1642.25 sq.ft     |

2<sup>nd</sup> Floor - 7<sup>th</sup> Floor

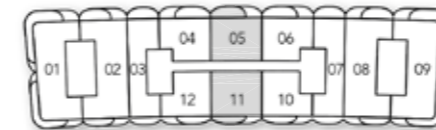


2 BEDROOM SINGLE ASPECT  
TYPE C

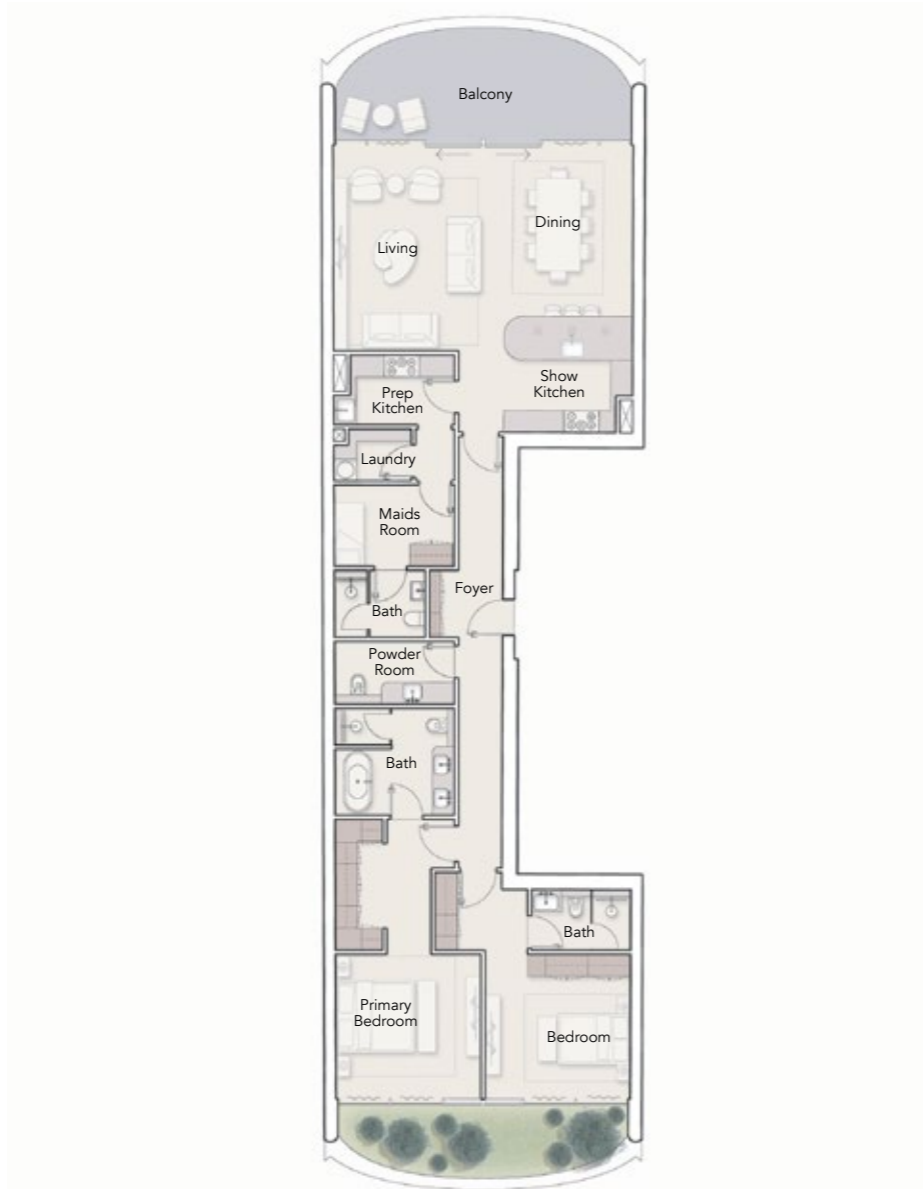


| Internal Living Area | Outdoor Living Area | Total Living Area |
|----------------------|---------------------|-------------------|
| 1665.28 sq.ft        | 261.67 sq.ft        | 1926.95 sq.ft     |

2<sup>nd</sup> Floor - 7<sup>th</sup> Floor

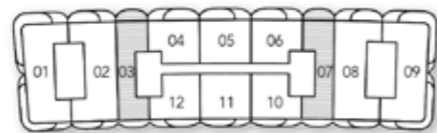


2 BEDROOM DUAL ASPECT

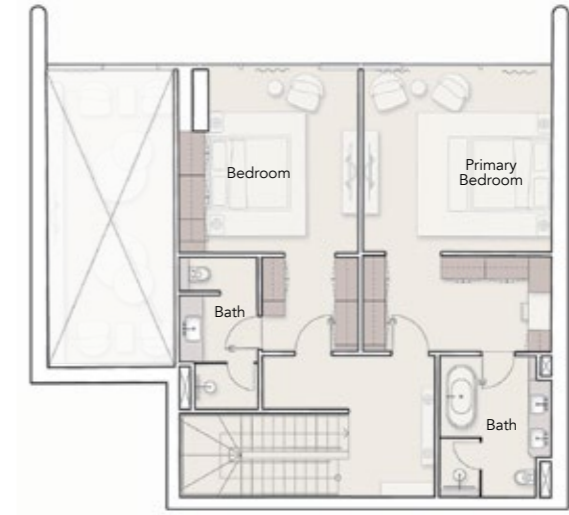
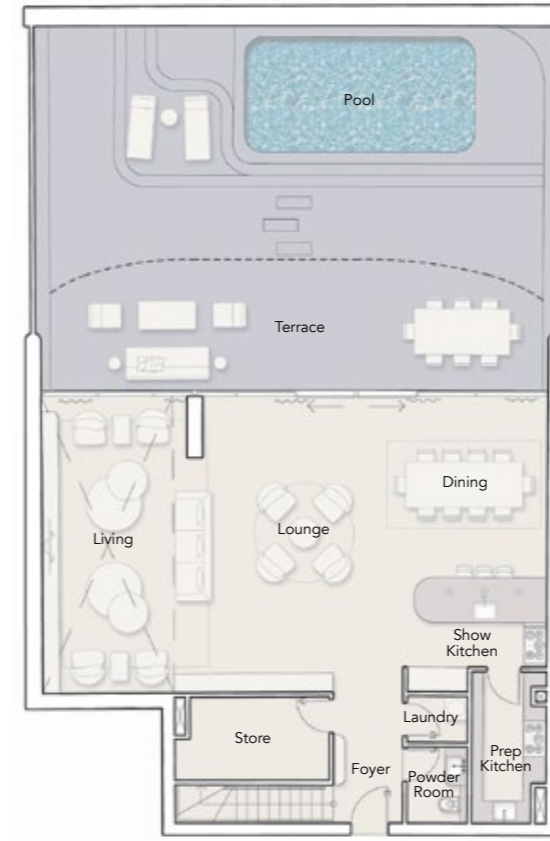


|                      |                     |                   |
|----------------------|---------------------|-------------------|
| Internal Living Area | Outdoor Living Area | Total Living Area |
| 1879.27 sq.ft        | 238.96 sq.ft        | 2118.23 sq.ft     |

2<sup>nd</sup> Floor - 7<sup>th</sup> Floor

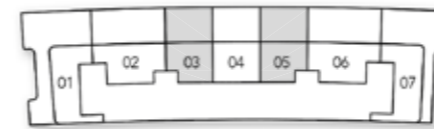


2 BEDROOM DUPLEX



|                      |                     |                   |
|----------------------|---------------------|-------------------|
| Internal Living Area | Outdoor Living Area | Total Living Area |
| 2770.41 sq.ft        | 1443.44 sq.ft       | 4213.85 sq.ft     |

Ground Floor



Lower Level

1<sup>st</sup> Floor



Upper Level

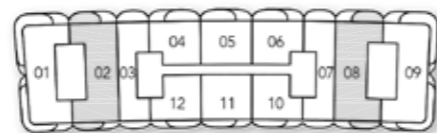


3 BEDROOM DUAL ASPECT



|                      |                     |                   |
|----------------------|---------------------|-------------------|
| Internal Living Area | Outdoor Living Area | Total Living Area |
| 2841.02 sq.ft        | 392.56 sq.ft        | 3233.58 sq.ft     |

2<sup>nd</sup> Floor - 7<sup>th</sup> Floor

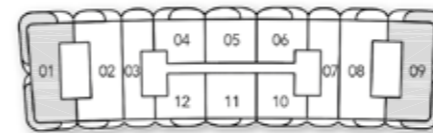


3 BEDROOM DUAL ASPECT  
CORNER UNIT

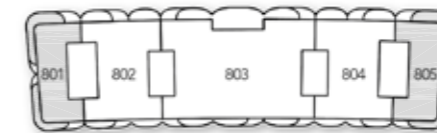


|                      |                     |                   |
|----------------------|---------------------|-------------------|
| Internal Living Area | Outdoor Living Area | Total Living Area |
| 2634.46 sq.ft        | 897.49 sq.ft        | 3531.96 sq.ft     |

2<sup>nd</sup> Floor - 7<sup>th</sup> Floor



8<sup>th</sup> Floor



### 3 BEDROOM DUPLEX



|                      |                     |                   |
|----------------------|---------------------|-------------------|
| Internal Living Area | Outdoor Living Area | Total Living Area |
| 3325.94 sq.ft        | 1443.98 sq.ft       | 4769.91 sq.ft     |

Ground Floor



Lower Level

1<sup>st</sup> Floor



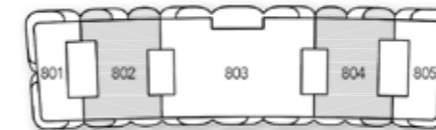
Upper Level

### 4 BEDROOM DUAL ASPECT



|                      |                     |                   |
|----------------------|---------------------|-------------------|
| Internal Living Area | Outdoor Living Area | Total Living Area |
| 4720.83 sq.ft        | 631.52 sq.ft        | 5352.35 sq.ft     |

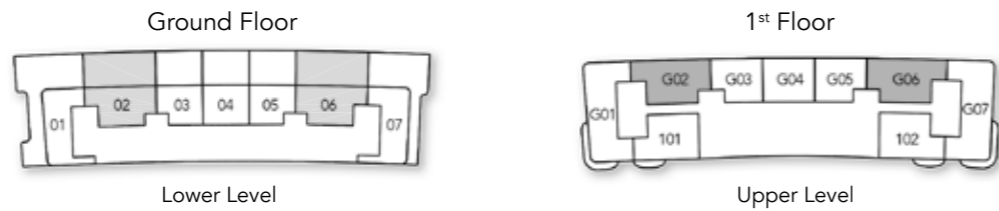
8<sup>th</sup> Floor



4 BEDROOM DUPLEX



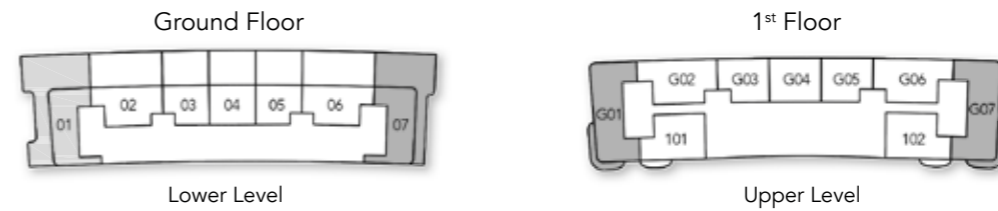
|                      |                     |                   |
|----------------------|---------------------|-------------------|
| Internal Living Area | Outdoor Living Area | Total Living Area |
| 3909.45 sq.ft        | 2230.28 sq.ft       | 6139.73 sq.ft     |



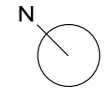
4 BEDROOM DUPLEX  
CORNER UNIT



|                      |                     |                   |
|----------------------|---------------------|-------------------|
| Internal Living Area | Outdoor Living Area | Total Living Area |
| 4207.29 sq.ft        | 5710.03 sq.ft       | 9917.32 sq.ft     |



PRESIDENTIAL SUITE  
6 BEDROOM DUAL ASPECT

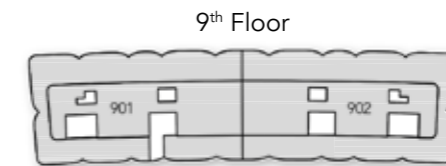


Internal Living Area  
9917.32 sq.ft

Outdoor Living Area  
1852.79 sq.ft

Total Living Area  
11770.11 sq.ft

PENTHOUSE  
5 BEDROOM CORNER ASPECT



| Internal Living Area | Outdoor Living Area | Total Living Area |
|----------------------|---------------------|-------------------|
| 5952.97 sq.ft        | 8083.90 sq.ft       | 14036.88 sq.ft    |